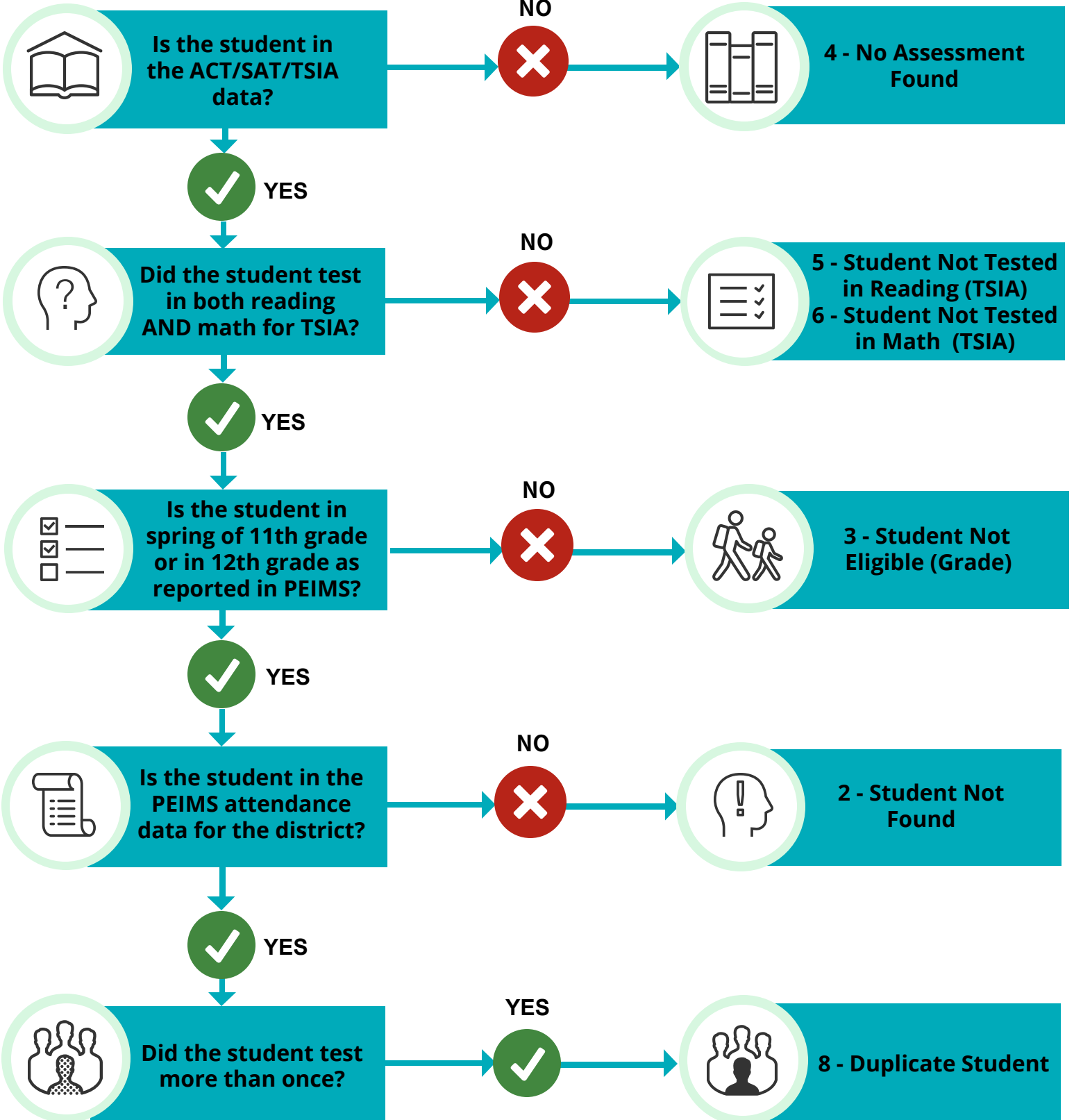


REIMBURSEMENT FLOW CHART

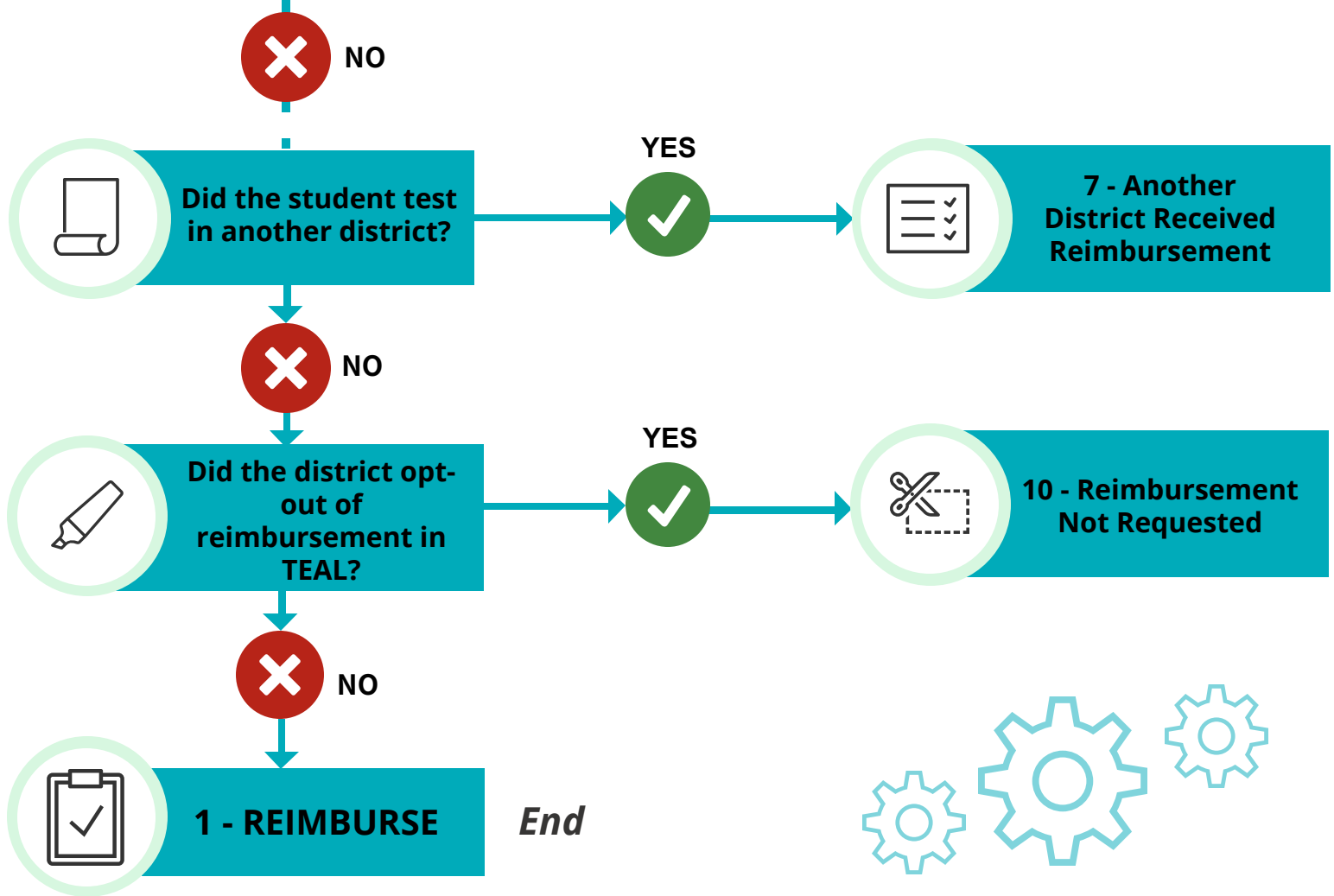
College Preparation Assessments

START

Reimbursement Code



Continued...



A Few Important Notes...

1

TEA determines grade level eligibility using PEIMS attendance data at time of test administration. Grade level eligibility are students who tested in the spring of their junior year or during their senior year.

2

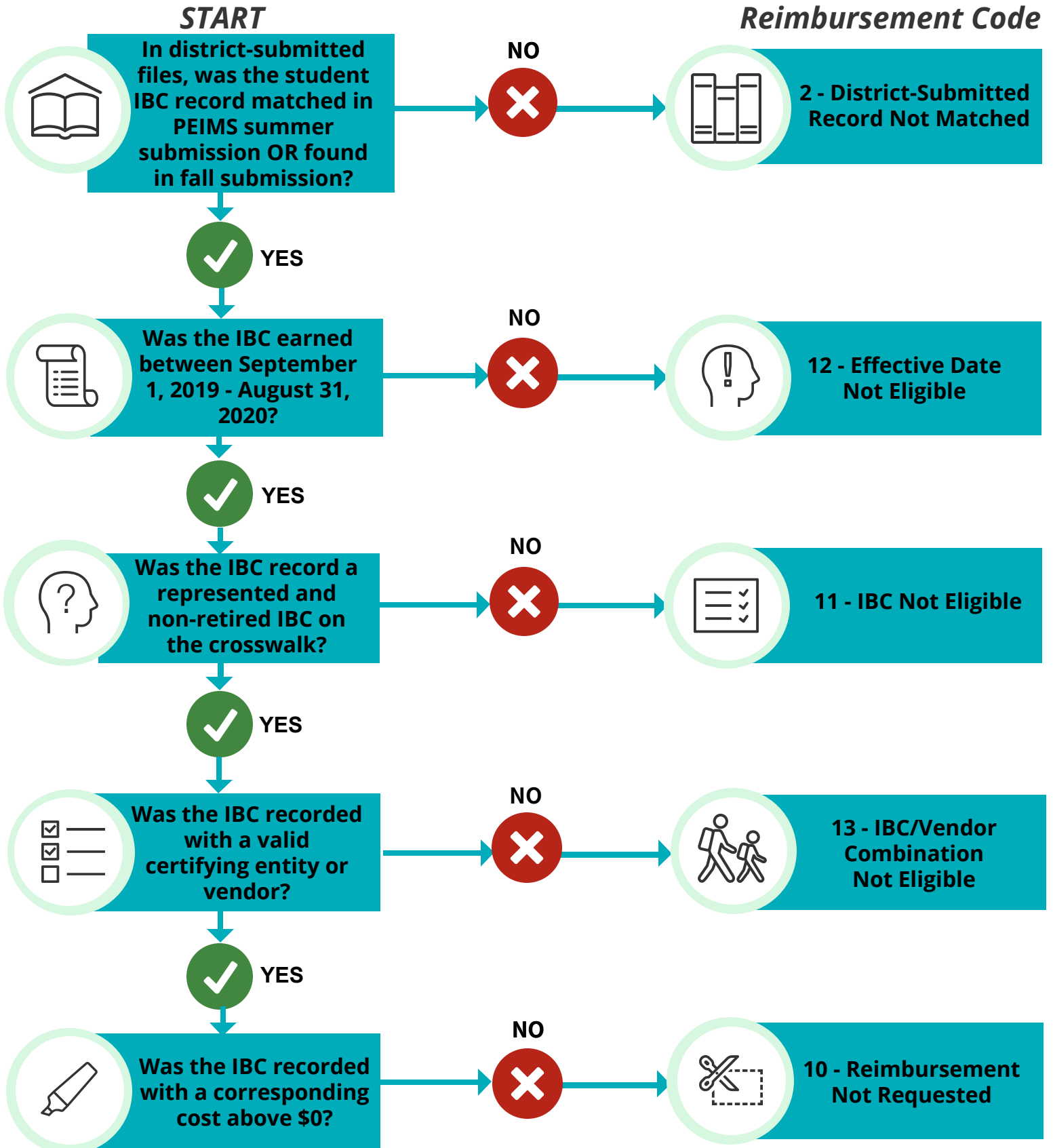
If a student received reimbursement for the TSIA, only one administration is represented on the report. The date of administration is the most recent.

3

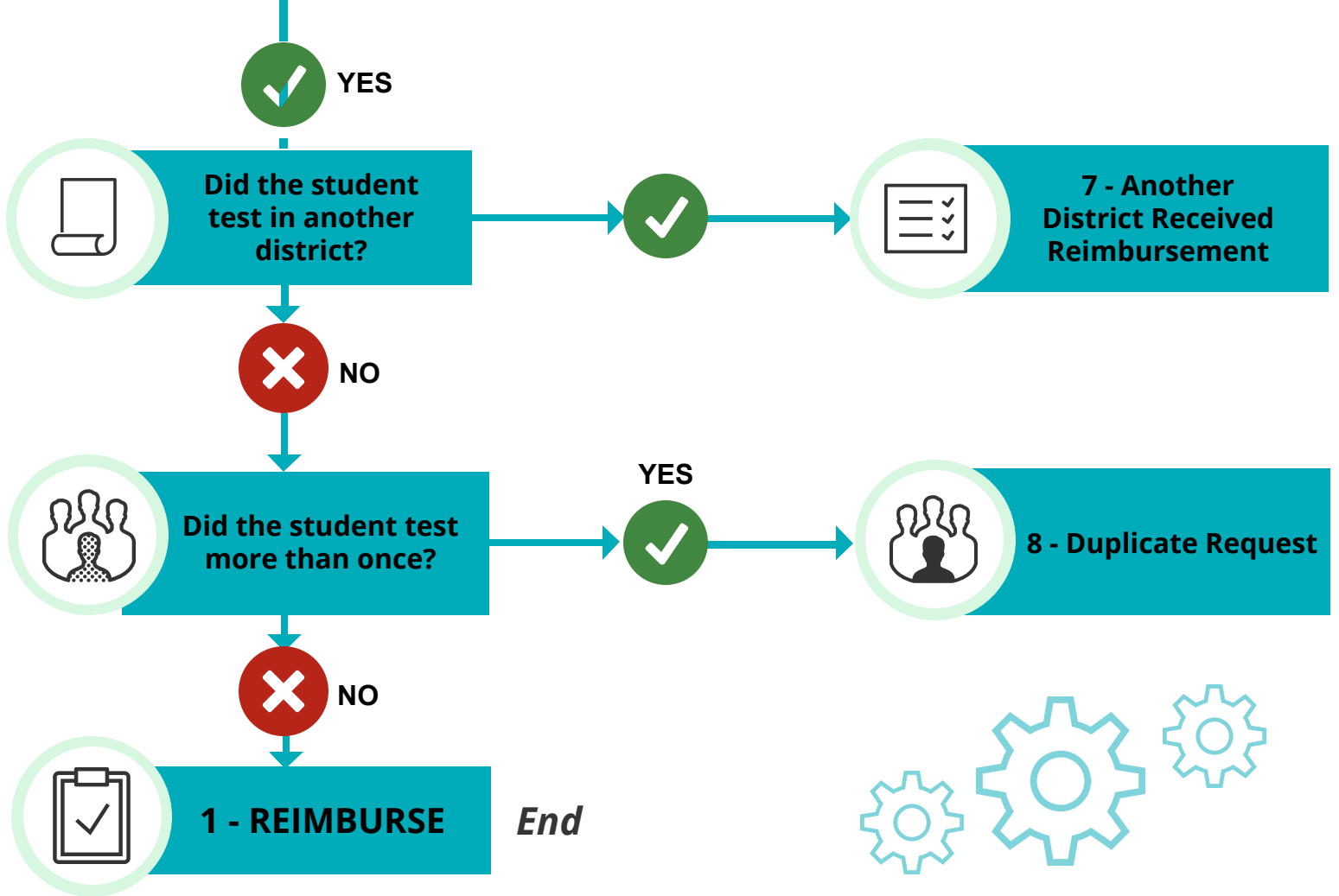
TEA removes duplicates by reimbursing the first, highest cost assessment

REIMBURSEMENT FLOW CHART

Industry-Based Certifications



Continued...



A Few Important Notes...

1

TEA can only reimburse IBCs found in PEIMS. In the district-submitted files, many IBCs were not found in the summer submission but were found as re-reported in the fall submission. In this case, the fall submission was considered as priority.

2

The process for submitting a district file was a one-time solution. All IBCs for reimbursement will be recorded in PEIMS moving forward.

3

TEA removes duplicates by reimbursing the first IBC with an associated cost above \$0.