

MONTH YEAR

EDUCATION SERVICE CENTER  
**REGION 11**  
CHILD NUTRITION PROGRAM



PULL UP A SEAT FOR  
*The Monthly*  
*Rewind!*

PLEASE TYPE YOUR NAME AND  
DISTRICT IN THE CHAT BOX TO  
SIGN IN.

# Our team

**HEATHER MORRIS**

[hmorris@esc11.net](mailto:hmorris@esc11.net)

8) 740-7557

**ELISHA BURY**

[ebury@esc11.net](mailto:ebury@esc11.net)

8) 740-7556

**WENDY PYNE**

[wpyne@esc11.net](mailto:wpyne@esc11.net)

8) 740-7515

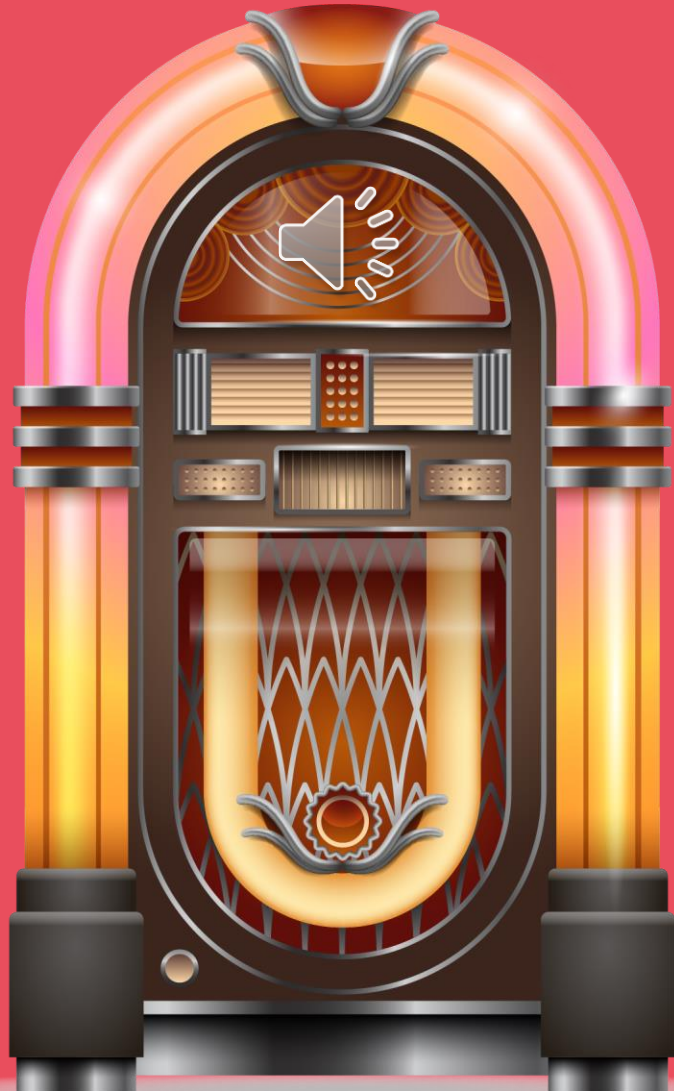
**TAMIKA FIGGS**

[tfiggs@esc11.net](mailto:tfiggs@esc11.net)

8) 740-3661



# TODAY'S AGENDA





**LET'S  
ROCK:  
#MADE WITH  
SCHOOL LUNCH**





ARE YOU  
READY TO  
SHARE THE  
VALUE AND  
IMPORTANCE  
OF SCHOOL  
MEALS?

Been all over the world  
Speaks 4 languages  
Runs 2 miles in 12 minutes  
SAT score 1400  
Bravest person you know

School Lunches  
1990 - 2002

What will school  
lunch make you?

Made With  
**SCHOOL  
LUNCH**

 | 

This institution is an equal opportunity provider. [www.madewithschoollunch.com](http://www.madewithschoollunch.com)

The advertisement features a man in a military uniform with an American flag patch on his shoulder and a young boy in an orange shirt standing back-to-back. The background is green with blue wavy lines. The text is arranged in a list of achievements, a date range, a central question, and logos at the bottom.

**#MADE WITH SCHOOL LUNCH**



MADE WITH  
SCHOOL  
LUNCH  
POSTERS IN  
ENGLISH &  
SPANISH



First job in a kitchen at 17  
Head chef at 23  
Cooked on 5 continents  
2 Michelin stars. 1 to go  
"OMG! Best meal ever!"

School Lunches  
1966 - 1978

What will school  
lunch make you?

**Made With  
SCHOOL  
LUNCH**

This institution is an equal opportunity provider. [www.madewithschool lunch.com](http://www.madewithschool lunch.com)



1 in 8 kids in America lives in a household without consistent access to adequate food. School lunches don't just keep kids healthy-they keep kids from being hungry so they can learn. [#MadeWithSchoolLunch](#)

DON'T  
FORGET TO  
DOWNLOAD  
THE FREE  
SOCIAL MEDIA  
POSTS



# UPDATES & NEWS



# REVISED MICROPURCHASE LOG

- To include other programs - not just NSLP
- Find it on SquareMeals > Programs > National School Lunch Program > Administration/Forms
  - Search "micro"

Texas Department of Agriculture | Procurement | Micro-Purchase  
October 26, 2023

**Micro-Purchase Log**  
(Use this form for purchases with a total cost equal to or less than \$10,000 or a TDA-approved self-certification amount when the micro-purchase option is the method of procurement.)

CE Name: \_\_\_\_\_ CE ID: \_\_\_\_\_ Program Year: \_\_\_\_\_

Date of Purchase	Vendor/Supplier Name, Address	Product(s) and/or Service(s) Purchased (Quantity + Description)	Unit Price for Each Item	Total Cost	Reason for Using Micro-Purchase & the Method Used to Determine That the Cost of Each Item is Reasonable (Attach Relevant Documentation)

Signature of Authorized Representative of the CE: \_\_\_\_\_ Date: \_\_\_\_\_  
*I attest that this information is true, accurate, and complete to the best of my knowledge.*

Page 1 of 3

# VERIFICATION TIMELINE

- November 15: All verification activities completed
- November 28: Deadline to Complete [Verification Report jotform](#)
- [Verification sample templates suite](#)
- Don't forget: [verification report - individual household forms](#)



TEXAS DEPARTMENT OF AGRICULTURE  
COMMISSIONER SID MILLER

## SY2023-2024 Verification Report

**ALL CEs contracted to operate NSLP and/or SBP are required to complete this form.**

The data previously reported in the Preliminary Verification Report and the TX-UNPS Verification Report are now all included in the single submission of this form - the SY23-24 Verification Report.

Submission of this form IS MANDATORY. The data reported here is required for TDA's submission of the FNS-834 and FNS-742 to USDA.

**Your completed submission is due November 28, 2023.**

# COMMON VERIFICATION REPORT ERRORS

- Number of campuses must match what's reported in TX-UNPS
- Answer that you ARE exempt from Direct Certification if your CEP - even though you are not
- Problems with numbers matching in section 3 - ONLY FOR THOSE SCHOOLS TAKING APPLICATIONS
  - Let's take a closer look...

## SECTION 3: Students Approved as FREE Eligible NOT Subject to Verification

All CEs must report Section 3.

Are ALL schools and/or RCCIs in the CE exempt from direct certification? \*

No

Yes

CEs that meet ANY of the following criteria should select YES above:

- All sites are RCCIs with no day students.
- All sites are RCCIs with day students that remain enrolled at the home district.
- All sites participate in CEP or Provision 2 in a NON BASE year.

MAKE SURE  
YOUR  
NUMBERS ADD  
UP

### SECTION 3

Students approved as FREE eligible NOT subject to verification

3-2: Students directly certified through Supplemental Nutrition Assistance Program (SNAP):

3-2 B. Number of Students 184

3-3: Students directly certified through other programs:

3-3 B. Number of Students 218

3-4: Students certified categorically FREE eligible through SNAP letter method:

3-4 B. Number of Students 0

This number needs to be the total of all free students in the supplementary section

### SUPPLEMENTARY SECTION 3

Breakout of students directly certified at schools/RCCIs NOT operating special provisions or operating Provision 2 in a BASE YEAR

S3-1 TANF 0

S3-2 MEDICAID-FREE 206

S3-3 MEDICAID-REDUCED PRICE 11

S3-4 FDPRI 0

S3-5 FOSTER 12

S3-6 MIGRANT 0

S3-7 HOMELESS 0

S3-8 RUNAWAY 0

S3-9 HEADSTART/EARLY HEADSTART 0

Add up all numbers except Medicaid Reduced

DO NOT INCLUDE SNAP IN THIS SECTION

# OVS MATERIALS IN SPANISH

- 5 posters
- 2 tip sheets
- Intended for students
- Download [here](#)

USDA Food and Nutrition Service  
U.S. DEPARTMENT OF AGRICULTURE

## LLÉNATE DE ENERGÍA CON EL DESAYUNO

ESCOGE AL MENOS 3 ALIMENTOS  
INCLUYE 1/2 TAZA DE FRUTA O VEGETAL

Proteína Fruta Grano

Leche Fruta Proteína Grano

Leche Fruta Grano

4 alimentos

USDA es un proveedor empírico y garantiza que ofrece igualdad de oportunidades.  
WFS-013-0 - October 2009

# TOP SSO AR FINDINGS

## SSO TOP 5 AR FINDINGS

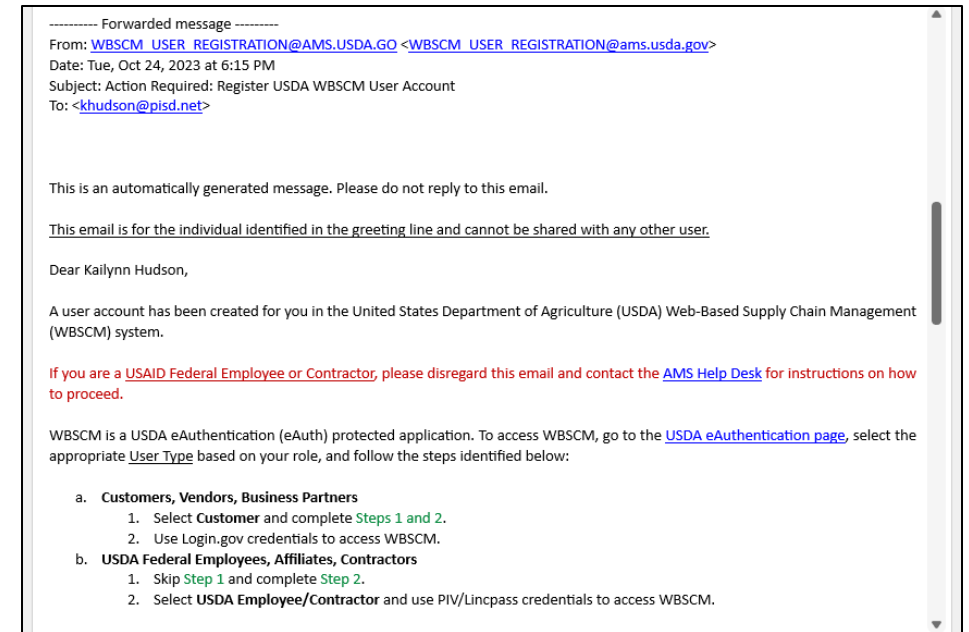
1	Did not meet meal component requirements for review period
2	Did not meet meal component requirements for K-5 meal pattern
3	Did not meet daily meal components for one day
4	Did not meet meal component requirements for 6-8 meal pattern
5	Did not meet serving requirements for beans/peas vegetable subgroup



# WBSCM NEXT STEPS

## DEADLINE TO COMPLETE ALL MANDATORY TRAINING IS NOVEMBER 17

- Confirm you have completed training
- Verify your WBSCM account once you receive the USDA email
- Let your ESC specialist know you got into the live system so we can check you off
- Register for weekly TDA sessions in January-February



..	Week 1: <a href="#">WBSCM Prep Activities with TDA (January 8<sup>th</sup> – 12<sup>th</sup>) [eventbrite.com]</a>
..	Week 2: <a href="#">Create <b>draft</b> Fruits and Vegetables Requisitions with TDA (January 16<sup>th</sup> – 22<sup>nd</sup>) [eventbrite.com]</a>
..	Week 3: <a href="#">Create all other <b>draft</b> Direct Delivery Requisitions with TDA (January 23<sup>rd</sup> – 26<sup>th</sup>) [eventbrite.com]</a>
..	Week 4: <a href="#">QA WBSCM Direct Delivery Requisitions &amp; Submit (January 30<sup>th</sup> – February 2<sup>nd</sup>) [eventbrite.com]</a>
**	Week 5: TDA/ESC WINTER CONFERENCE (NO SESSIONS)
..	Week 6: <a href="#">Create <b>draft</b> Processing Requisitions with TDA (February 12<sup>th</sup> – 16<sup>th</sup>) [eventbrite.com]</a>
..	Week 7: <a href="#">QA WBSCM Processing Diversion Requisitions &amp; Submit (February 20<sup>th</sup> – 26<sup>th</sup>) [eventbrite.com]</a>



# MID-YEAR WAREHOUSE INVENTORY

- TX-UNPS will be locked Friday, December 15 for the December 18-22 physical inventory count at Forte Frozen
- TDA will notify CEs with eBlast when inventory is done



# CALLS OF THE MONTH

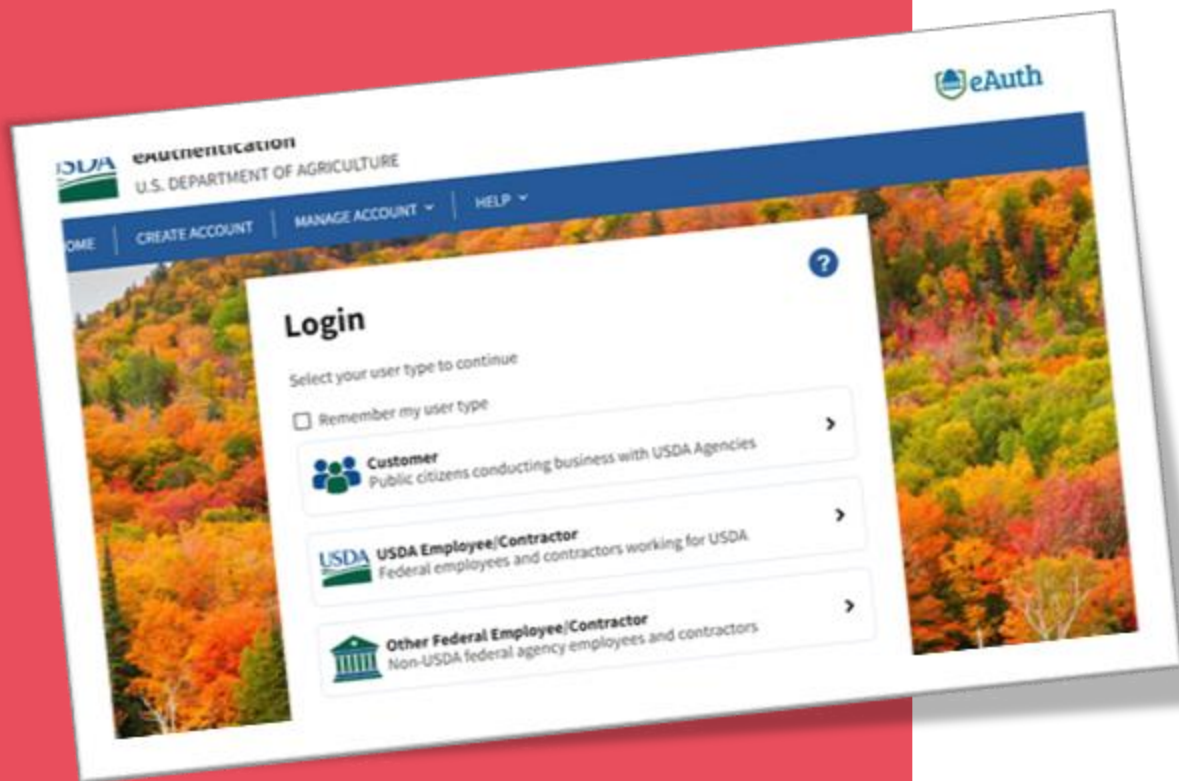




WHY CAN'T I  
GET MY  
WBSCM  
TRAINING  
LOGIN TO  
WORK?

- Check your day
  - The training environment is closed on Mondays and Fridays
- Are you logged in under FFAVORS?
  - Log out completely from FFAVORS
  - Close your browser
  - Clear your cache
  - Try it again!

# WBSCM TROUBLESHOOTING GUIDE



## WBSCM Account Setup Troubleshooting Guide

A screenshot of the WBSCM login form. It features a "Log In with Password" header with a help icon. The form includes fields for "User ID" (containing "TXNTRN+Lemon1User1@gmail.com") and "Password" (masked with asterisks). There are "Forgot User ID" and "Forgot Password" links. A "Show Password" checkbox is present. A blue "Log In with Password" button is at the bottom.

**Troubleshoot:** Try these steps in the following order:

### Verify URL

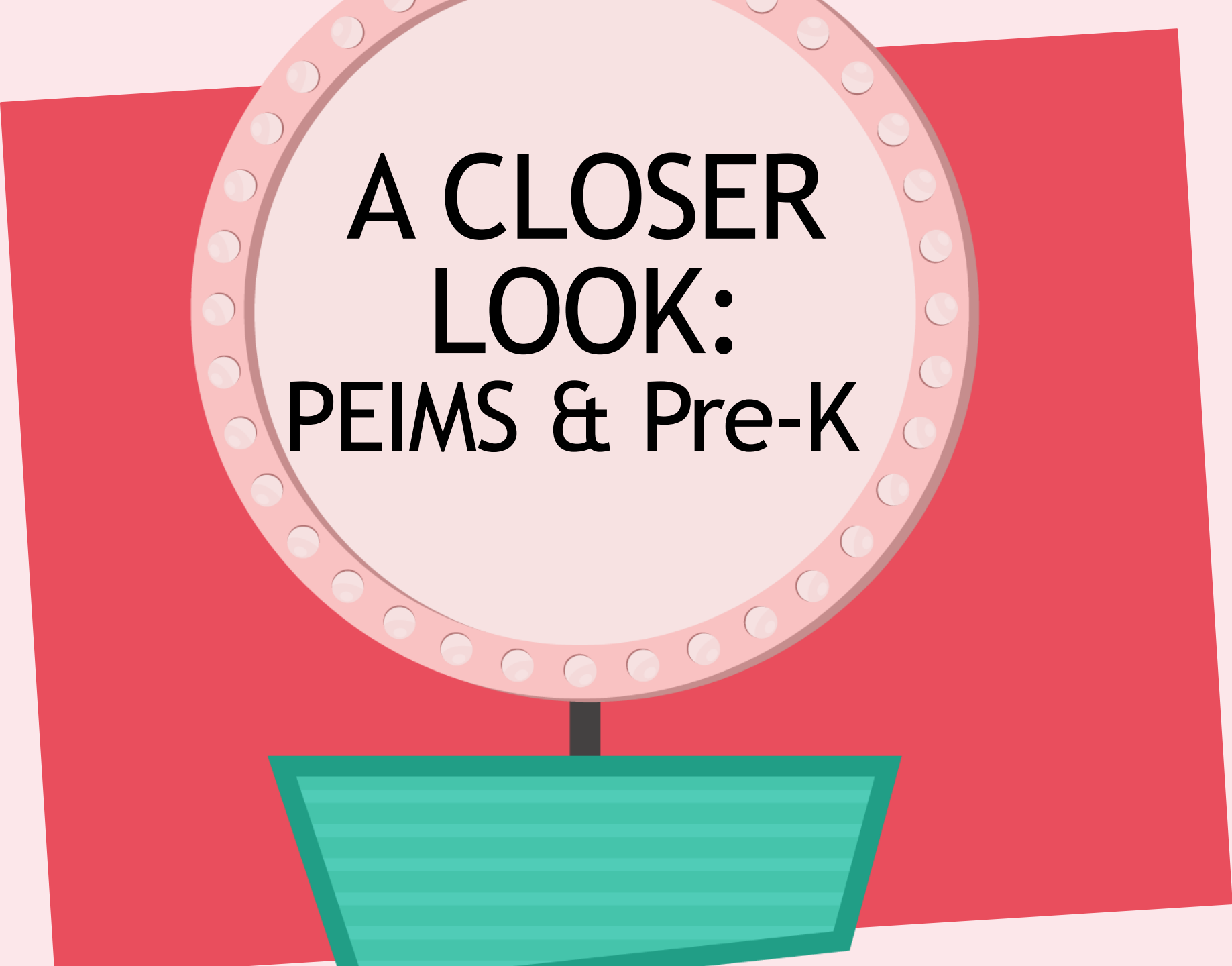
1. Look at the URL in the web address bar
2. If "registration" does not appear in the URL, you are in the wrong place

### Verify existing eAuth ID used for FFAVORS

1. Go to <https://www.eauth.usda.gov/eauth/b/usda/updateaccount>
2. Log in with FFAVORS username and password
3. Click Manage Account > Update Account
4. Under **Login Information** section
  - Note the eAuth ID
5. **Log out (! this is very important)**
6. Log out of all systems and programs
7. Close all Google Chrome browser tabs

### WBSCM Registration

1. Go back to the **Action Required email**
2. Click on the long link under Step 2
3. **Type** the eAuth ID (verified in Step 4 above) in User ID field. *Do not copy/paste or use Autofill / Auto-saved data*
4. **Type** password. *Do not copy/paste or use Autofill / Auto-saved data*
5. Rules of Behavior screen should appear
6. Read and Accept
7. It will automatically log into the WBSCM live system



**A CLOSER  
LOOK:  
PEIMS & Pre-K**



# PRE-K ROUNDUP/ENROLLMENT

- Districts can start application process for Pre-K in spring
- The Pre-K liaison must verify income for ALL Pre-K students as part of the enrollment process
  - Verification of income qualifies Pre-K students as code 99 (if eligible) for the entire next school year
- If meal applications are accepted and approved, pre-K students get the carryover for 30 days
  - Meal eligibility does not continue for the entire next school year
  - If students reapply and are eligible or are captured through Direct Certification, they can be coded a 1 or 2 (depending on status) instead of code 99
  - CN may share this information with PEIMS



# GOOD TO KNOW

- CN staff cannot code for PEIMS with code 99 unless that time is paid out of the general fund
- Pre-K enrollment **DOES NOT** automatically qualify students for free meals



# IMPORTANT DEADLINES





**November 15**

☐ Federal *Verification* Process Deadline

**November 19**

☐ Farm Fresh Challenge Documentation Deadline

**November 28**

☐ CE submission of *Verification* Report is due in jotform

**December 1**

☐ All new FSMC contracts (RFPs) due

**December 6**

☐ Check Texas ELMS for new DC data

# CLASSES & REMINDERS



# UPCOMING REGION 11 CLASSES

- **NOVEMBER 14** - WBSCM  
Makeup Session/Office Hours  
(virtual)
- **NOVEMBER 15** - Menu  
Planning & Food  
Allergies/Special  
Dietary Needs
- **DECEMBER 6** - Fundamentals  
of USDA Foods\*
- **JANUARY 25** - The Monthly  
Rewind



Sign up [here](#).



## ACDA in the Hot Seat: Best Practices | Recipient Agency

November 14th, 4:00pm - 5:00pm ET on YouTube Live

Join us on November 14th for the first part in our series on Best Practices - What to Do and What NOT to Do with a focus on Recipient Agencies. We will speak with Anji Branch with Goodings ID in Idaho, Rob Markowski with Pinellas County Schools in Florida, and Dalla Emerson with Bowling Green Independent School District in Kentucky. This event will be moderated by Robin Bowman from Core Food Service.

**This event will be hosted on [YouTube Live!](#)**

# American Commodity Distribution Association

Register [here](#) for this YouTube Live presentation!

Tuesday, Nov 14th

3pm Central Time

[ACDA YouTube video Library](#)

# ESC HOLIDAY CLOSURES

- November 20-24
- December 21-29



# CN Training Schedule

| FALL 2023



Updated 8/18/2023

## JULY 2023

24	Eligibility (Virtual)	1–3 p.m.
25	Eligibility	9–11 a.m.
26-27, 31	Food Safety for Child Nutrition (& ServSafe Exam)	8:30 a.m. – 3:30 p.m.

## AUGUST 2023

9	Administrative Review	9 a.m. – Noon
---	-----------------------	---------------

## SEPTEMBER 2023

6	Procurement Review	9 a.m. – Noon
13	Verification (Virtual)	1:30–3 p.m.
28	Fall Directors' Meeting	9 a.m. – 3 p.m.

## OCTOBER 2023

3	RA101 – WBSCM Getting Started (Virtual)	9–10 a.m.; 2–3 p.m.
9	Meal Pattern	8:30 a.m. – 3:30 p.m.
10	RA102 – WBSCM Entitlement (Virtual)	9–10 a.m.; 2–3 p.m.
11-13	Writing, Updating, and Revising a HACCP Plan	8:30 a.m. – 3:30 p.m.
17	RA103 – WBSCM Requisitions (Virtual)	9–10 a.m.; 2–3 p.m.
24	RA001, RA002, RA003 WBSCM Fundamentals	9–11 a.m.; 2–4 p.m.
26	The Monthly Rewind (Virtual)	2–3 p.m.
31	RA105 – WBSCM Account Setup (Virtual)	9–10 a.m.; 2–3 p.m.

## NOVEMBER 2023

7	RA106 – WBSCM Reports (Virtual)	9–10 a.m.; 2–3 p.m.
9	The Monthly Rewind (Virtual)	2–3 p.m.
14	Makeup WBSCM/Office Hours (Virtual)	9–10 a.m.; 2–3 p.m.
15	Menu Planning & Food Allergies/Special Dietary Needs	8:30 a.m. – 3:30 p.m.

## DECEMBER 2023

6	Fundamentals of USDA Foods	8:30 a.m. – 2:30 p.m.
---	----------------------------	-----------------------



For more information, contact the Child Nutrition Program at (817) 740-7545. *Schedule is subject to change. Please visit [www.esc11.net/childnutrition](http://www.esc11.net/childnutrition) for the most current information.*

This product was funded by the USDA.

# TRAINING SCHEDULE/ CLASSES

The SY23-24 ESC  
Region 11 Child  
Nutrition training  
schedule is here!

Copies available

Also available online

# 2024 TEXAS ASSOCIATION FOR SCHOOL NUTRITION

**January 29-31**  
**Horseshoe Bay Resort**



**UNLEASHING POTENTIAL**  
**GROWING TOGETHER**  
**2024 TASN PCS**

# FIELD REPORT







# BRAG ON YOUR PROGRAM!

- Tell Patti all about it
- Photos, blurbs, links, videos, etc.
- [padams@esc11.net](mailto:padams@esc11.net)

**YOUR GREATEST  
HITS!**





Granbury ISD Child Nutrition

3d · 🌐



Lettuce talk about hydroponics! Hydroponic lettuce grows very fast and does not require soil. The lettuce always comes in crispy and tastes delicious. We get our hydroponic lettuce from [TrueHarvest Farms](#) in Belton! [#FarmFreshChallenge](#) [#FarmFreshTexas](#) [Texas Department of Agriculture](#)



Hydroponic Lettuce



# GRANBURY ISD

Students in Granbury ISD enjoy some local hydroponically grown lettuce!

# GRAPEVINE-COLLEYVILLE ISD

- Students rewarded with prizes for smart meal choices
- Student favorite: fresh roasted Brussels sprouts



gcisdnutrition · Following

gcisdnutrition 2d  
🍏🍏 Our students made some outstanding choices with their school lunches, opting for balanced and wholesome meals that fuel their bodies and minds. To celebrate their commitment to health, we rewarded them with exciting prizes! 🎁 #morethanjustaschoollunch #wearegcisd #schoollunch #realschoolfood

**No comments yet.**  
Start the conversation.



gcisdnutrition · Following

gcisdnutrition 5d  
"If you feed them, they will come" is totally true! Today we have several student favorites for #schoollunch including our #txlocal Whole Grain Pizza, #Fresh Roasted Brussels Sprouts and Parmesan Zucchini and Corn! #morethanjustaschoollunch #WeAreGCISD #schoolfood #realschoolfood #pizzaday

**No comments yet.**

Liked by eveofthejungle and others  
5 DAYS AGO

Add a comment...



northwestisdfoodservice

northwestisdfoodservice October is National Apple Month and Lance Thompson ES enjoyed sampling apples today! Apple smoothies, warm cinnamon apples, and apple yogurt cups received rave reviews! Northwest ISD Aramark Student Nutrition  
1w

Like Comment Share

Liked by cindy\_correahernandez and others  
OCTOBER 19

# NORTHWEST ISD

- It's apple-sampling time for Lance Thompson ES students!



dentonisdchildnutrition ...

dentonisdchildnutrition Fresh cut jicama and tajin makes for a great and tasty farm fresh snack! #farmfreshtexas  
3d

eatatpcck12 Yum!  
4h Reply

I56schoolmeals Jicama is so good for you AND delicious! 🍌  
1d Reply

# MANSFIELD ISD

- District enjoys Farm Fresh Fridays with fresh cut jicama and tajin

**FARM FRESH FRIDAYS**  
October 13th  
**FRIDAY'S FEATURE: BRUSSELS SPROUTS**  
Brussels Sprouts are a great source of fiber and the vitamins C, A, and K!

**Fun Facts**

- BRUSSELS SPROUTS ARE MEMBERS OF THE CABBAGE FAMILY
- BRUSSELS SPROUTS ARE NAMED AFTER BRUSSELS, THE CAPITAL CITY OF BELGIUM
- BRUSSELS SPROUTS CAN BE PREPARED MANY WAYS, INCLUDING STEAMING, ROASTING, AND GRILLING

**Word Search**  
CAN YOU FIND ALL THE WORDS?

XCDCMJIVRFEFNUEZJJPK  
UBPPOTUECSIJSRHXK  
FYQTRTUWKFHURYXTCRU  
RKWUWJJRQOHTILRMKADW  
ZUNMZZAIEADKTVBXYBAJ  
OCZUKYHMF FCOQERHEBEB  
OFBRUSSELS SPROUTSALZ  
VKELRGCLRWXVGOPLPGOJ  
KYUCAFXMQJQZKUHQECF  
UNTPLOZLWKBDFWDOJIAK  
CUNZKAFILXWBDQWYJIAK  
AVVRSEWTB CABIQAGUNLGR  
OGSDLRWRWHGQBIRJPAI  
MPMKMMOIHJUHESMYULGA  
BBHOWKWBJMDARCFVARSB  
SNNMDNTOGTTBOKRLLLOZ  
VEGETABLEJKAOREJAKWY  
HMTWVSJSDDVIYJSAHMNT  
SNDMJMBBUTDUWHKMRSY  
QZSMNGGILXFFXEMOZWD

Brussels Sprouts Vegetable Farm Fresh



# SPOOKY MEALS

ALEDO ISD!

# SPOOKY MEALS

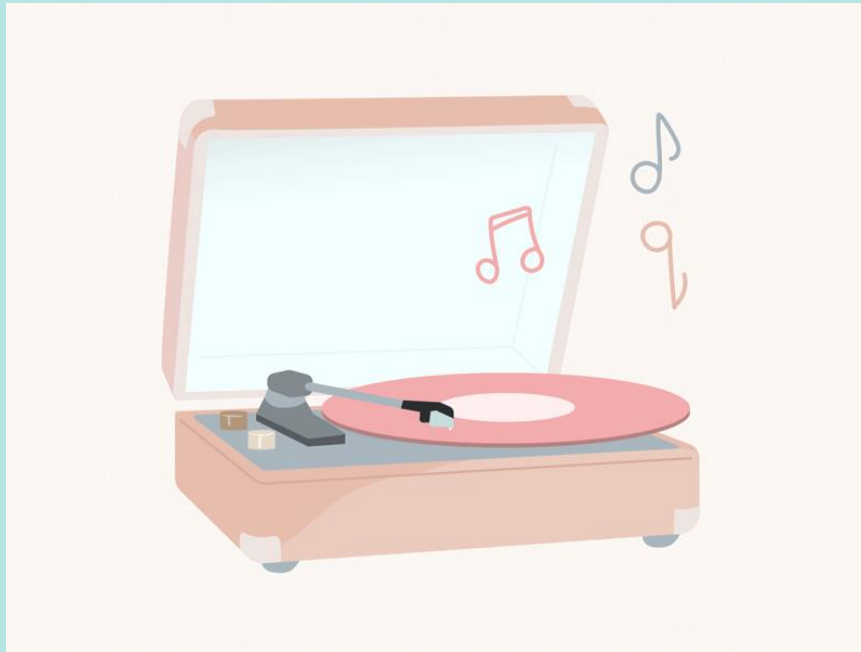
DENTON ISD



Questions







**THANK YOU FOR  
ATTENDING**



**TEXAS DEPARTMENT OF AGRICULTURE**  
**COMMISSIONER SID MILLER**

In accordance with federal civil rights law and U.S. Department of Agriculture (USDA) civil rights regulations and policies, this institution is prohibited from discriminating on the basis of race, color, national origin, sex (including gender identity and sexual orientation), disability, age, or reprisal or retaliation for prior civil rights activity.

Program information may be made available in languages other than English. Persons with disabilities who require alternative means of communication to obtain program information (e.g., Braille, large print, audiotape, American Sign Language), should contact the responsible state or local agency that administers the program or USDA's TARGET Center at (202) 720-2600 (voice and TTY) or contact USDA through the Federal Relay Service at (800) 877-8339.

To file a program discrimination complaint, a Complainant should complete a Form AD-3027, USDA Program Discrimination Complaint Form which can be obtained online at: <https://www.usda.gov/sites/default/files/documents/ad-3027.pdf>, from any USDA office, by calling (866) 632-9992, or by writing a letter addressed to USDA. The letter must contain the complainant's name, address, telephone number, and a written description of the alleged discriminatory action in sufficient detail to inform the Assistant Secretary for Civil Rights (ASCR) about the nature and date of an alleged civil rights violation. The completed AD-3027 form or letter must be submitted to USDA by:

**1. mail:**

U.S. Department of Agriculture  
Office of the Assistant Secretary for Civil Rights  
1400 Independence Avenue, SW  
Washington, D.C. 20250-9410; or

**2. fax:**

(833) 256-1665 or (202) 690-7442; or

**3. email:**

[Program.Intake@usda.gov](mailto:Program.Intake@usda.gov)

This institution is an equal opportunity provider.