



# STATE OF THE UPGRADE

APRIL 2024

# AGENDA – STATE OF THE UPGRADE

- PARALLEL SUBMISSION
- INTEGRATION
- DATA OUT
- END-TO-END
- TECHNICAL UPDATE
- 2024-2025 GO-LIVE
- CLOSEOUT





# Parallel Submission

# PARALLEL SUBMISSION GOALS



**Complete Vendor Readiness**

**Various Product Integrations**

**Testing of 300+ LEAs**

**Regional ESC Support**

**Testing of All Custom Solutions**

**Vetting of TEA Resources**

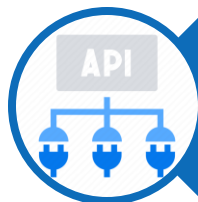
**Testing of All TSDS Submissions**



# PARALLEL SUBMISSION APPROACH

## EXPECTATIONS:

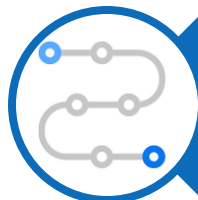
- All TSDS vendors are required to test solutions with their LEA partners.
- TEA will release new functionality throughout the Parallel Submission.
- ESCs will support participating LEAs in ensuring vendor readiness.



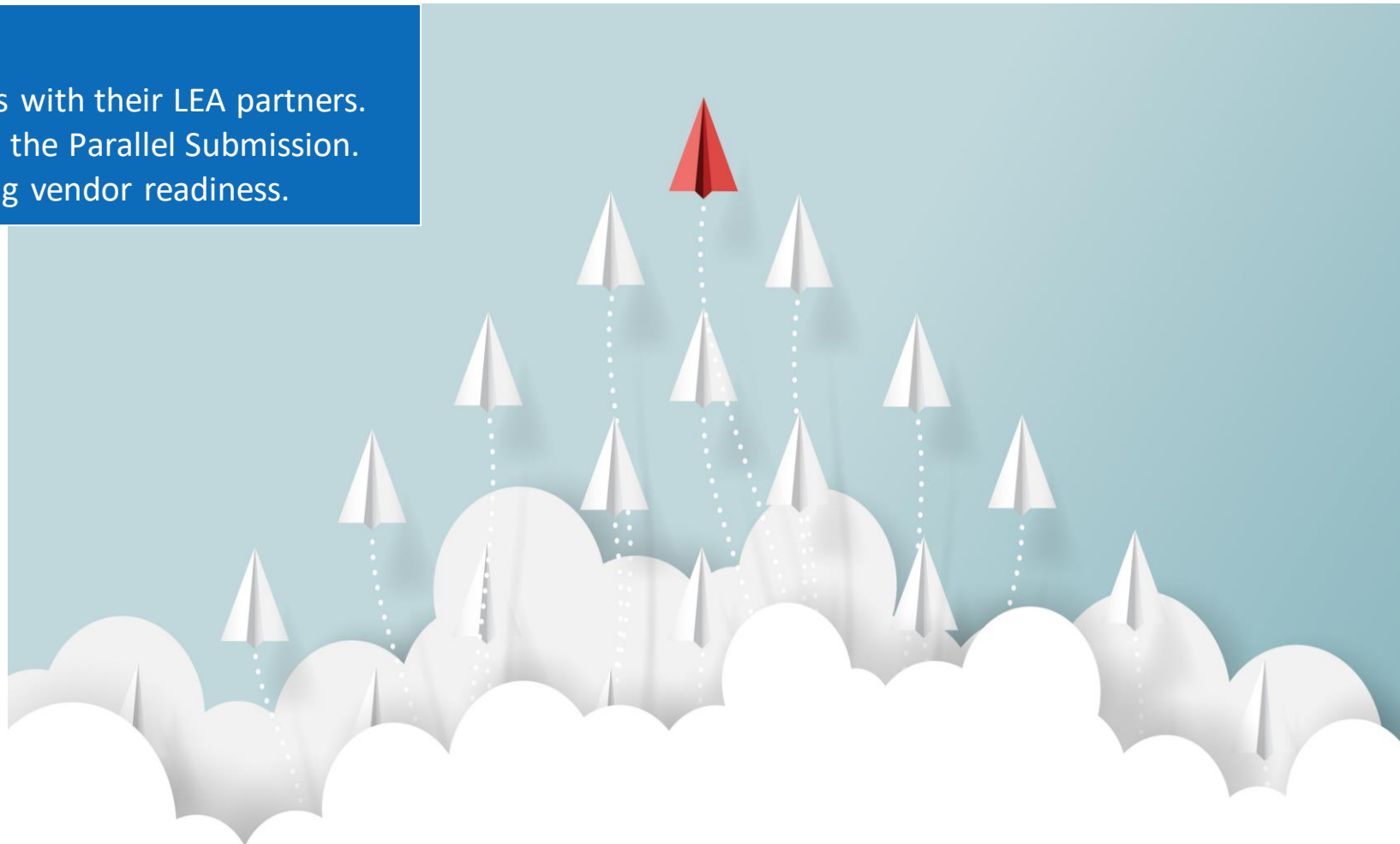
Integration



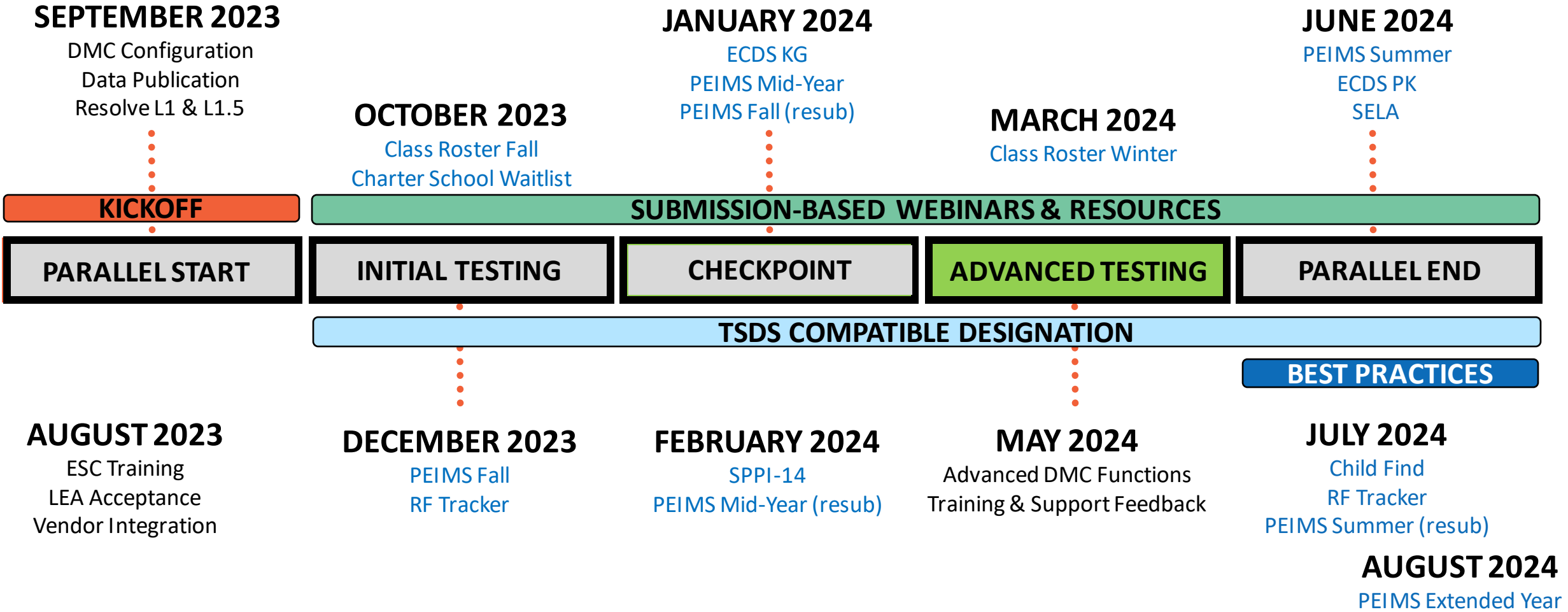
Data Out



End-to-End



# PARALLEL SUBMISSION TIMELINE



# PROMOTION & LEVEL 2 SCHEDULE



<b>TSDS Data Collections</b>	<b>Parallel Promotions &amp; Level 2 Validations *</b>	<b>Collection Due Date in Production (XML)</b>
<b>Charter School Waitlist</b>	<b>September 8, 2023</b>	<b>October 27, 2023</b>
Class Roster Fall	October 6, 2023	October 19, 2023
<b>PEIMS Fall</b>	<b>November 10, 2023</b>	<b>December 7, 2023</b>
<b>PEIMS Mid-Year</b>	<b>November 30, 2023</b>	<b>January 25, 2024</b>
<b>ECDS Kindergarten</b>	<b>December 13, 2023</b>	<b>January 25, 2024</b>
<b>SPPI-14</b>	<b>February 9, 2024</b>	<b>February 15, 2024</b>
<b>Class Roster Winter</b>	<b>March 8, 2024</b>	<b>March 28, 2024</b>
<b>SELA</b>	<b>March 15, 2024</b>	<b>June 20, 2024</b>
PEIMS Summer	April 22, 2024	June 27, 2024
RF Tracker	April 22, 2024	July 18, 2024
ECDS Prekindergarten	May 6, 2024	June 27, 2024
Child Find	June 3, 2024	July 25, 2024
PEIMS Extended Year	June 17, 2024	August 29, 2024



\*Dates Subject to Change

# VENDOR PRODUCT SCORECARD

ERP (HR/Finance) VENDOR PRODUCTS											
Vendor	Domain	Finance						Staff			
	Entity	ActualExt	BudgetExt	ContractedInstructionalStaffFTEExt	LocalEducationAgency	PayrollExt	SharedServiceArrangementExt	Staff	StaffEducationOrganizationAssignmentAssociation	StaffEducationOrganizationEmploymentAssociation	StaffSchoolAssociation
Vendor 1	Product A	P	Y	N	Y	Y	N	Y	Y	Y	Y
Vendor 2	Product A	Y	Y	N	Y	Y	N	P	N	P	N
Vendor 3	Product A	P	P	N	Y	N	N	Y	Y	P	Y
	Product B	P	P	N	Y	P	N	P	Y	P	N
Vendor 4	Product A	Y	Y	N	Y	Y	N	Y	Y	Y	Y
Vendor 5	Product A	Y	Y	N	Y	Y	N	P	P	Y	Y
Vendor 6	Product A	P	Y	Y	Y	Y	Y	P	Y	Y	Y
	Product B	P	Y	N	Y	Y	N	P	Y	Y	N
Vendor 7	Product A	P	P	N	Y	Y	N	P	Y	Y	Y

Y

All Data Elements in Entity have been published for at least one LEA by vendor product.

P

One or more Data Elements in Entity have been published for at least one LEA by vendor product.

N

No Data Elements in Entity have been published for at least one LEA by vendor product.

COMING SOON TO TSDS WEBSITE





Integration

# Onboarding

*The successful integration of a vendor product with an LEA that allows connection to the IODS and provides the initial publication of data.*

**TSDS  
Training**

**DMC  
Access**

**Key  
Secret**

**Product  
Setup**

**Data  
Load**

# PARALLEL SUBMISSION MILESTONES



**AUG.  
2023**

## Parallel Submission

- LEAs Acceptance
- IODS & DMC Available

**SEP.  
2023**

## Statewide Kickoff

- Vendor Onboarding Plan
- SDK: TEDS 2024.2.0 (July)

**OCT.  
2023**

## Initial Testing

- CSW & Class Roster
- SDK: TEDS 2024.2.1 (Sept)

**JAN.  
2024**

## Project Checkpoint \*

- Complete LEA Onboarding
- Start Advanced Testing

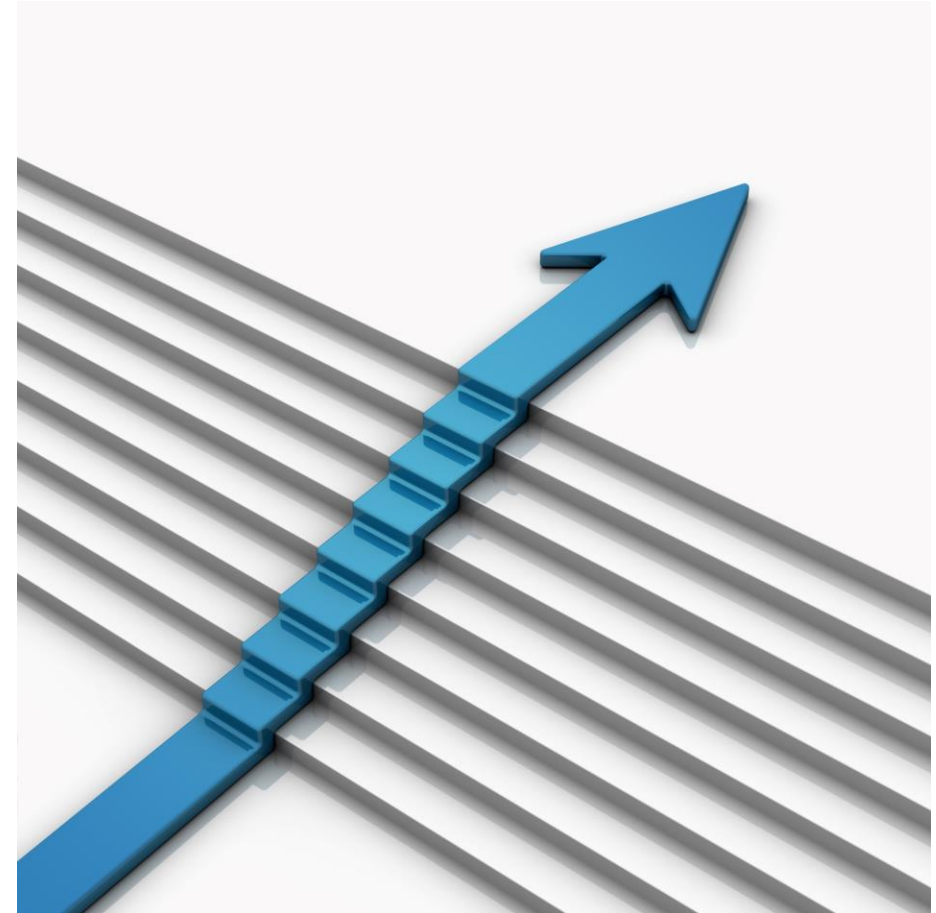
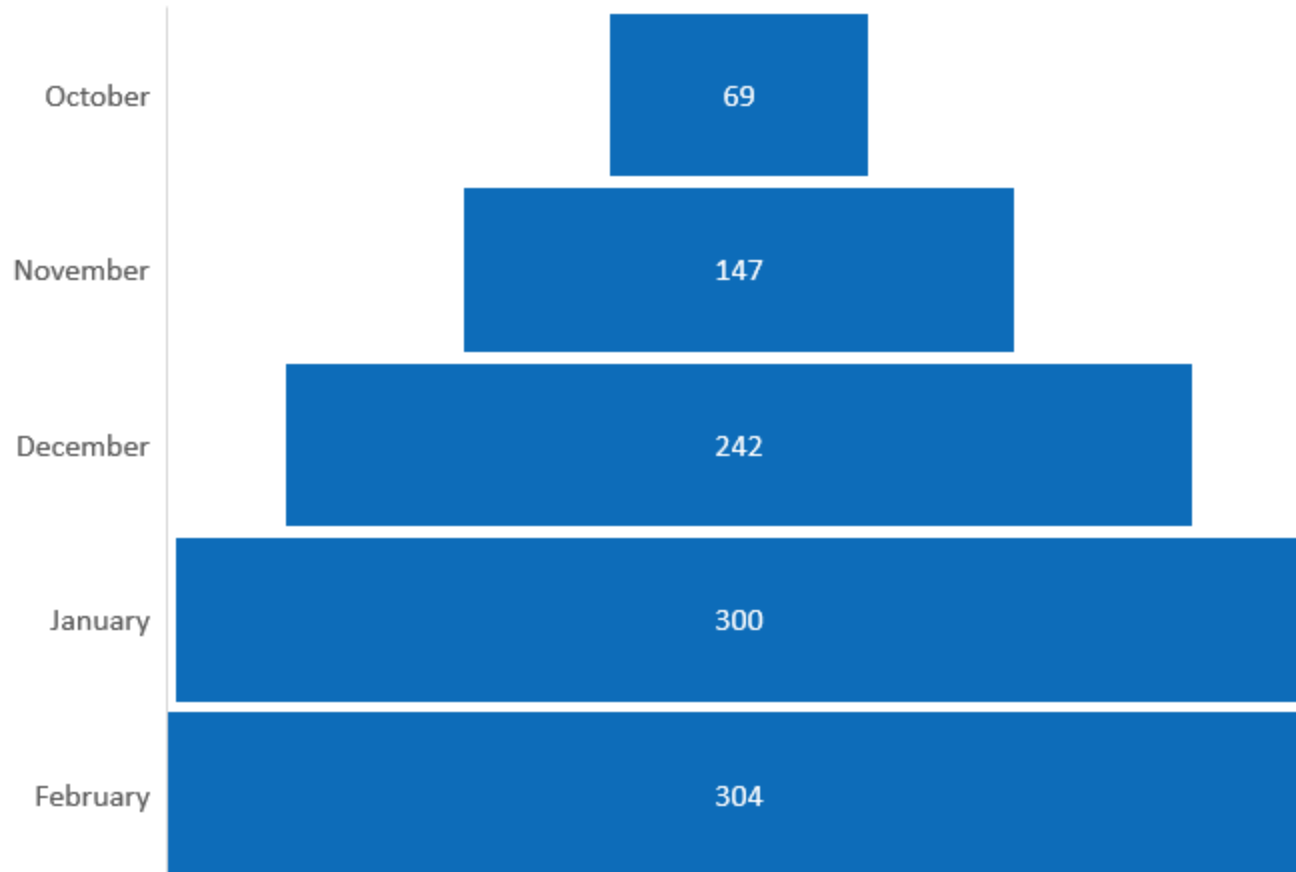
\*TEA advised vendors in August to have all participating LEAs onboarded successfully by January 2024.





# HISTORICAL STATUS OF ONBOARDING

Total Number of LEAs



# STATUS OF INTEGRATION (ONBOARDING)

**312**  
LEAs Loaded  
to IODS

**96%**  
Number of  
Parallel LEAs



**AS OF: APRIL 15, 2024**  
**Total of 324 LEAs**

# CHALLENGES ENCOUNTERED

The shift from **Ed-Fi v3.2.c** data standards used for Pilot to **Ed-Fi v4.0** used in Parallel Submission.



The release of TEDS changes and **SDK** (Software Development Kit) **updates** after the start of the Parallel Submission.



The vendor integration with various **product hosting** implementations (local, cloud, ESC).



The LEA onboarding coordination with two **different vendor products** (SIS & HR/Finance).



## Integration



# ENSURING ONBOARDING COMPLETENESS

---

TEA will continue to actively support any vendor with an LEA that has yet to be onboarded by April 1, 2024.

---

The Ed-Fi Alliance will continue to engage any vendor with technical challenges preventing the onboarding of an LEA.

---

Vendors are required to provide a detailed plan of action of any roadblocks preventing the onboarding of an LEA.

---

TEA will continue to provide the status of onboarding efforts during the monthly FCN and vendor webinars.

---

TEA will coordinate with the LEA, ESC, and vendor if the LEA is no longer able to participate in the Parallel Submission.



# FREQUENTLY ASKED QUESTIONS



## What should an LEA do if they have not been onboarded yet?

An LEA should contact their vendor and/or ESC to determine what may be preventing their ability to send data to the IODS. Please ensure the following:

1. The LEA is on the list of participating [Parallel LEAs](#).
2. The LEA has generated and provided the Key & Secret credentials to their vendor(s).
3. The LEA has completed any necessary setup in the vendor product.
4. The LEA has the appropriate access to the Parallel environment to confirm data is being loaded.

TEA continues to support any vendor that has not yet onboarded all their participating LEAs. Depending on the severity of the roadblock, an LEA may decide to withdraw from the Parallel Submission and focus on their readiness for the 2024-2025 Go-Live year.



# FREQUENTLY ASKED QUESTIONS



**What is the status of ECDS vendors, and will an LEA be able to test their KG and PK submissions during the Parallel Submission year?**

Children's Learning Institute (CLI) has successfully onboarded their initial set of LEAs. They have contacted an additional 61 LEAs for them to setup their key and secret information. This will allow CLI to post student assessment data for the additional LEAs to retroactively test the ECDS KG Submission.

Amplify is tentatively scheduled to onboard their initial set of LEAs by March 29, 2024.

The ECDS PK vendors are still in the development phase and will be expected to onboard their partner LEAs in time to effectively test and compare their ECDS PK Submission.



# Data Out



# Data Out

*The continuous publication of data to the IODS to allow confirmation of data completeness in the TSDS PEIMS and CORE applications.*

**Publish  
Data**

**Confirm  
DMC**

**Resolve  
Errors**

**Promote  
Data**

**Verify  
Counts**



# CURRENT STATUS



90%

SIS Entities (50)  
Loaded for at  
least one LEA

100%

ERP Entities (10)  
Loaded for at least  
one LEA



**AS OF: MARCH 15, 2024**

# DMC LOAD SUMMARY REPORT



LEARNING TEST ISD (701603) 2023-2024 GO

**TEA** Texas Education Agency Data Management Center

Monitor Validations Admin View Reports

Home >> Load Summary

## View LEA Reports

### Load Summary

**Domains Loaded for 2023-2024** → 17

- Alternative and Supplemental Services
- Assessment
- Discipline
- Education Organization
- Enrollment
- Finance
- Prior Year Leaver
- Restraint Event
- School Calendar
- Staff
- Student Academic Record
- Student Application

Entity	Records
StudentEducationOrganizationResponsibilityAssociation	157
StudentSchoolAssociation	157

TEA - REG XXX Service Center (701950) 2023-2024 GO

**TEA** Texas Education Agency Data Management Center

Monitor Validations Admin View Reports

Home >> Load Summary

## View ESC Reports

### Load Summary

- Organizations that have NO loaded data for 2023-2024** → 1
  - TRAINING CHARTER1 (701804)
- Organizations that HAVE loaded data for 2023-2024** → 2
  - REG XXX EDUCATION SERVICE CENTER (701950)
  - SEDS LEARNING ISD (701603)

**Domains**

- Alternative and Supplemental Services
- Assessment
- Discipline
- Education Organization
- Enrollment
- Finance
- Prior Year Leaver
- Restraint Event

Entity	Records
StudentEducationOrganizationResponsibilityAssociation	157
StudentSchoolAssociation	157

**LEAs and ESCs can verify data out with these reports.**





# DMC RECURRING LEVEL 2 (UPCOMING)



LEARNING TEST ISD (701603) 2023-2024 GO

**TEA** Texas Education Agency

Data Management Center

Monitor Validations Admin

Home >> Schedule L2 Validation Jobs

## Monitor Validations

Run L2 Validations:

\* Collection : PEIMS  
\* Submission : MDYR  
\* Categories : All

Subcategories

Campus  
SSA Organization Association

Add  
Add All  
Remove  
Remove All

\* Selected Subcategories

Actual  
Local Education Agency  
Shared Services Arrangement Actual

Fatals  Special Warning  Warning

Validation Name :

Run Tonight/Next Processing Window  
 Schedule Future Instance   
 Schedule Recurring

\* Recurrence Name Mon, Fri PEIMS MdYr

\* Recurrence Pattern

Select day(s) of the week to run:

Sunday  Monday  Tuesday  Wednesday  
 Thursday  Friday  Saturday

\* Recurrence Range

Start 09/15/2023 End 04/10/2024

NOTE: Validations jobs scheduled after 09:45 AM CT may not be queued for processing to complete by 06:10 PM CT the following day

Next Reset

Texas Education Agency  
1701 N. Congress Avenue  
Austin, Texas, 78701  
(512) 463-9734  
Map | Site Policies

Complaints  
Encrypted Email  
Fraud Hotline  
Contact With Texans  
Public Information Requests

Frequently Asked Questions  
EDCs  
State Of Texas  
Texas Legislature  
Homeland Security

Trial  
Military Families  
Where Our Money Goes  
Equal Education Opportunity  
Governor's Committee on



# DMC SEARCH DATA (UPCOMING)



## Data Management Center

Home Monitor Validations **Search Data** View Reports Admin System Admin

Home » Search Landing Zone

### Search Landing Zone

Search for an entity and apply filters to narrow your search:

Hide Filters

Entities that are not available in the Search field do not contain any data in your IODS

StudentUniquelD

- 1121335373 X
- 1121337643 X
- 1121352219 X
- 1121956491 X



## Data Management Center

Home Monitor Validations **Search Data** View Reports Admin System Admin

Home » Search Landing Zone

### Search Landing Zone

Search for an entity and apply filters to narrow your search:

Filters

Entities that are not available in the Search field do not contain any data in your IODS

Show 50 entries

Search Table:

Export

StudentUniquelD	StudentAssmtIdentifier	AssmtIdentifier	Namespace	JSON
1121335373	StudAssmt_1	assmt_1	uri://local.texas.gov	<a href="#">View</a>
1121337643	StudAssmt_2	assmt_2	uri://local.texas.gov	<a href="#">View</a>
1121352219	StudAssmt_3	assmt_3	uri://local.texas.gov	<a href="#">View</a>
1121956491	StudAssmt_4	assmt_4	uri://local.texas.gov	<a href="#">View</a>



Showing 1 to 4 of 4 entries

First Previous Next Last



# CHALLENGES ENCOUNTERED



The commitment of participating LEAs to complete the necessary setup to publish data.



The interpretation, understanding, and timely resolution of Level 1 (API) errors.



The lack of training opportunities and support for LEAs to resolve Level 1 and Level 1.5 issues.



The lack of IODS transparency and reporting within the DMC application to confirm data.



# ENSURING DATA COMPLETENESS



---

TEA will generate reports specific to each **vendor product** on a frequent basis.

---

The vendor product report will be based upon data published in the **IODS**.

---

Each entity, common type, and data element will be marked as 'verified' for any **non-null/non-blank values**.

---

Data validations (Level 1.5 / Level 2) associated to a particular data element **will not need to be resolved** to be marked 'verified'.

---

TEA will utilize detailed **score card reporting** to determine data completeness per vendor product.



**STARTING IN MARCH 2024**



# FREQUENTLY ASKED QUESTIONS



## How often will my vendor send data to the IODS?

This will depend on each vendor product. TEA's expectation is to have data available at near-real time and as changes are made in the source system. However, the timing and approach of sending data to the IODS will be based upon the vendor implementation.

An LEA should contact their specific vendor for training and guidance on the API sync process and/or service level agreements (SLAs) for issue resolution to ensure data is updated in an appropriate timeframe and manner to satisfy TSDS data submission requirements.

# FREQUENTLY ASKED QUESTIONS



**Does an LEA need to resolve all Level 1, Level 1.5, and Level 2 validation errors prior to proceeding to End-to-End testing?**

No. An LEA can proceed with testing their TSDS data submissions once enough data has been loaded to the IODS.

As a reminder, Level 1.5 filter results will prevent data from being loaded to TEA for data promotion. However, Level 2 validations will not prevent data from being loaded to TEA and will be run again during the Level 3 validations in the PEIMS and CORE applications.

# FREQUENTLY ASKED QUESTIONS



**Is there a data dependency and order in which data should be loaded to the IODS?**

Yes. The IODS does require data to be loaded in a specific order. TEA has been working closely with vendors to ensure proper loading and avoidance of Level 1 (API) errors.

Refer to the published document below for additional details:

[TSDS Upgrade Project Domain Dependency \(TEDS 2024.2.0\)](#)  
[texasstudentdatasystem.org](https://texasstudentdatasystem.org)



End-to-End



# End-to-End

*The continuous testing and comparison of TSDS data submissions by an LEA and ESC to ensure data completeness and accuracy.*

**Utilize  
Resources**

**Run  
Validations**

**Review  
Reports**

**Compare  
XML**

**Submit  
Issues**

# STATUS OF END-TO-END



**10**  
Charter School  
Waitlist

**67**  
ECDS KG  
Limited Categories

**229**  
PEIMS  
Fall

**104**  
SPPI-14

**120**  
PEIMS  
Mid-year

**22**  
Class Roster  
Winter



**Promotions**

**AS OF: MARCH 15, 2024**

# CHALLENGES ENCOUNTERED



The ability and timing for vendors to onboard their participating LEAs prior to submission due dates.



The resolution of Level 1 (API) and Level 1.5 filters for data promotion and comparison testing.



The availability of resources and guidance to effectively compare XML and API data.



The availability of staff and time during peak times of XML data submissions.



# ENSURING DATA ACCURACY



---

TEA will provide test cases and guides directly to LEAs participating in the Parallel Submission to test each TSDS data submission.

---

Participating LEAs will test and verify their data through TSDS downstream promotions, validations and reports.

---

Participating LEAs will confirm the vendor product readiness through documented feedback and resources.

---

The supporting vendor, ESC, and TEA will assist participating LEAs to resolve any critical issues preventing the completion of testing.

---

The test results and verification will contribute to the TSDS Compatible Designation for each vendor product.



**STARTING IN APRIL 2024**



# FREQUENTLY ASKED QUESTIONS



**What should an LEA do if they are unable to test and compare their API transactions before the TSDS data submission due date stated in TWEDS?**

An LEA can retroactively test any TSDS data submission, even after the submission (XML) due date stated in TWEDS. TEA will not close any of the TSDS data submissions in the Parallel Environment as they do now with the XML-based system.

Whenever possible, TEA encourages participating LEAs to plan and coordinate their testing efforts with the submission of their XML data to ensure the best possible test results and outcome.

# FREQUENTLY ASKED QUESTIONS



## How will LEAs not participating in the Parallel Submission know if their vendor is ready for the 2024-2025 Go-Live year?

TEA is requiring all TSDS vendors to obtain a TSDS Compatible Designation prior to the start of the 2024-2025 Go-Live year. This designation will ensure a vendor's product is able to successfully load all required and optional data needed for TSDS data reporting purposes.

Additionally, this designation will require the signoff of partnering LEAs on the data accuracy of each TSDS data submission. TEA will publish the status of each vendor's product(s) TSDS Compatible Designation on the TSDS website.



# TSDS COMPATIBLE DESIGNATION



## DATA COMPLETENESS

TEA will confirm data loading at the Entity, Common Type, and Data Element level.

Confirmation will include both required and optional data for TSDS reporting.

TEA will provide scorecard reporting on a frequent basis to ensure completeness.

## VENDOR REPORTS

## DATA ACCURACY

TEA will confirm data accuracy with submission-specific guidance and technical resources.

Confirmation will include test case resources and LEA verification.

TEA will combine results with data completeness to provide TSDS Designation.

## LEA CONFIRMATION

# TSDS WEBSITE FOR DESIGNATIONS



## Compatible Software

- Compatible Software (Selected)
- Data Transfer Utility
- Delete Utility
- Local Staging Area
- Validation Tool



## Compatible Software

TSDS is implemented across Texas, this page will list software that has demonstrated compatibility with one or more TSDS subsystems, as verified to TEA by at least one local education agency (LEA—Texas public school district or charter school). Vendors who are interested in being added to this page should contact [TSDS\\_feedback@tea.texas.gov](mailto:TSDS_feedback@tea.texas.gov) for assistance.

Unless otherwise noted, TEA has not supervised the testing of these applications, and LEAs are encouraged to research carefully and check references before purchasing any new system to interface with TSDS.

Vendors who wish to be added to this page should complete the [application form \(PDF\)](#) and submit it to TEA.

*NOTE: Vendors below may offer other products, but only those listed were confirmed.*

## Student Information Systems

Product	Vendor	<a href="#">UID:</a> Accepts & Generates Batch Files	<a href="#">UID:</a> Updates via web service	Loads to <a href="#">PEIMS</a>	Loads to ECDS	Loads to RFT	Loads to SPPI- 14	Loads to Class Roster	Loads to SPED Language Acquisition	Loads to Charter School Waitlist	Loads to Child Find
---------	--------	--	---	--------------------------------------	---------------------	--------------------	----------------------------	--------------------------------	---	--	------------------------------

TEA will utilize the TSDS website to post vendor designation status





# FREQUENTLY ASKED QUESTIONS



## **When is a vendor required to obtain the TSDS Compatible Designation and is the designation based upon the vendor or vendor product?**

All vendors who are responsible for providing products and/or solutions for TSDS state reporting to their LEAs are required to complete the necessary requirements and obtain their TSDS Compatible Designation by September 2024.

The TSDS Compatible Designation is assigned to a specific product. Vendors with multiple products (Student Information System, HR/Finance) will need to complete the designation process for each.

# FREQUENTLY ASKED QUESTIONS



## **When will an LEA need to complete the data accuracy requirements of the TSDS Compatible Designation for their vendor product(s) ?**

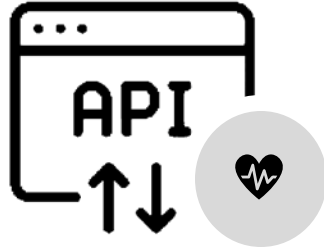
Not all LEAs participating in the Parallel Submission will need to formally complete the data accuracy requirements for their vendor product. TEA will collaborate with vendors to nominate and accept LEAs responsible for providing formal acceptance.

The designation process is intended to be incremental and continuous, starting in April 2024. An LEA identified as providing formal acceptance will need to complete the data accuracy requirements by September 2024.



Technical  
Update

# TESTING PERFORMANCE



## API Load Testing

Testing 250 LEAs and 300 consecutive loads threads

Testing of LEA with 65k students

- Load scenario of all students for single resource
- Load scenario of all students for all resources

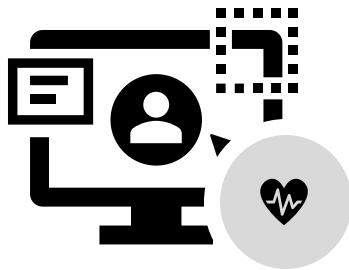


## DMC Level 2 Validations

Testing concurrent requests by multiple LEAs

Testing all collections available in Parallel environment

- PEIMS Fall: Tested 100 LEAs of various sizes (plan to scale)
- PEIMS Summer: Test planned for end of this month



## Downstream Promotion & Validation

Testing of 600+ LEAs:

- PEIMS Fall, PEIMS Summer, Child Find, ECDS Kindergarten, and Class Roster Winter
- Other collections to follow



## Downstream Collection Reports

Upcoming test of 200 Users for the following (Campus/LEA):

- PEIMS Fall: PDM-120-005, PDM1-111-002
- PEIMS Summer: PDM3-130-008, PDM3-121-001
- ECDS KG: All reports



# TECHNICAL ACCOMPLISHMENTS

Maintaining and supporting both the current XML data submissions as well as developing the TSDS Upgrade Project solution.



The TEA Development Team was able to successfully upgrade to the **Ed-Fi API 7.1** while ensuring no impact to vendors participating in the 2023-2024 Parallel Submission.

- Texas is the **first state** implementing the Ed-Fi API 7.1 (released November 2023)
- Allows for **performance** improvements to help alleviate bottle necks and provide improved **logging** (correlation id on error responses)



The TEA Development Team was able to continuously release new data collection updates and new functionality throughout the 2023-2024 Parallel Submission.

- Notable updates include the **DMC Load and Validation Summary Reports** and the ability to create **local descriptors** with the TEA-defined claim sets.

Provided technical assistance to participating TSDS vendors through TIMS support and meetings.

# FREQUENTLY ASKED QUESTIONS



## How often is data sent from the IODS to TEA for TSDS data promotion?

On average, TEA expects data to be available for TSDS data promotion within ten minutes of being successfully loaded to the IODS. This may change upon performing additional load tests and continued monitoring of the Parallel Submission, as more and more data is loaded from participating LEAs.

Every two minutes, the system will identify and extract any changes (inserts, deletes, updates) from the API. The changes are then moved to TEA and the appropriate processes are run to make the data available for promotion to the PEIMS and CORE applications.

# FREQUENTLY ASKED QUESTIONS



## How will deletes work in the absence of a Delete Utility?

The vendor product will provide a record-based delete via the API. Ed-Fi does not allow for bulk deletion or provide a way to delete entire Entities. Once the delete operation is sent to the IODS, the 'change' is identified by the system and the downstream data is updated for TSDS data promotions.

If it is determined that the entire IODS needs to be deleted, the LEA can submit a TIMS support ticket and TEA will perform the necessary action upon approving the request. The corresponding downstream data will also be cleared with that request. An LEA should treat this option as a last resort and additional coordination with their vendor(s) may be required.

# FREQUENTLY ASKED QUESTIONS

**What is the expectation at the start of the school year when all LEAs are sending their initial data? Are there any concerns?**

TEA is expecting peak processing and heavy usage at the beginning of the school year, as LEAs across the state send their initial data to the IODS. It will be vitally important for vendors and LEAs to manage, monitor, and resolve Level 1 (API) errors in a timely manner as the processing of errors does have an impact on system performance.

TEA is exploring several mitigating strategies to include:

- Limiting the number of concurrent tokens a LEA/vendor can have at a given time.
- Limiting the number of concurrent operations (post, read, put, delete) a token can perform.



# FREQUENTLY ASKED QUESTIONS



**Is it recommended for an LEA or vendor to load their data to the IODS outside of school business hours (after-hours)?**

TEA would encourage an LEA and vendor to minimize the use of ‘batch’ processing of data during after-hours, whenever possible. The preference would be for an LEA or vendor to continuously send data throughout the day, as appropriate.

As TEA continues to monitor and analyze the Parallel Submission, additional guidance and best practices will be provided to LEAs and vendors.



2024-2025  
Go-Live

# HELPFUL REMINDERS

## Attendance

TEA plans to collect attendance data two ways in the 2024-2025 school year:

1. Granular negative attendance by student which will eliminate the requirement for SIS vendors to **calculate attendance by six-weeks**.
2. **Cumulative attendance** by six-weeks by student. (no change from the way attendance is currently collected)

Note: TEA will eventually discontinue collecting cumulative attendance in a future school year after confirming attendance calculations.

## Enrollment

TEA has **postponed** the requirement to submit **enrollment** and **withdrawal** data for the purpose of the Enrollment Tracking collection.

For the 2024-2025 school year, an LEA will continue to submit enrollment and withdrawal student data through the **existing batch file process** and load them directly into the Unique ID application.

# FREQUENTLY ASKED QUESTIONS



**When is the cut-over from the Parallel Submission expected to happen and when should LEAs apply for the appropriate TEAL roles and privileges for the 2024-2025 school year?**

TEA is diligently working on finalizing the plan for opening the 2024-2025 school year. TEA will provide details and expectations in the coming weeks through FCN communications and vendor webinars.

TEA will also provide guidance and recommendations on how and when LEAs should begin applying for the appropriate TEAL roles and privileges.





# FREQUENTLY ASKED QUESTIONS



## What is the backup plan if an LEA or ESC is unable to submit their data to TSDS via API transactions?

The driving factor of the TSDS Upgrade Project is to upgrade to a current version of Ed-Fi data standards and the technology. As a result of this project, TEA will no longer be able to accept XML files for TSDS data reporting starting in the 2024-2025 school year. All data required for TSDS state reporting will need to be submitted via API transactions.

TEA, in partnership with the Ed-Fi Alliance, have been committed to supporting TSDS vendors throughout the 2022-2023 Pilot Program and 2023-2024 Parallel Submission to ensure their readiness. LEAs and ESCs are encouraged to coordinate with their vendor(s) on support expectations to ensure the timely submission of their TSDS state reporting.



**1**

**Monitor**

Now through August

Identify any participating LEAs in your region that have not been onboarded or are encountering a roadblock that needs TEA assistance.

**2**

**Communicate**

Now through August

Reach out to each participating LEA in your region and establish an effective cadence for communications and support.

**3**

**Train**

Now through August

Provide training opportunities to participating LEAs on new functionality and encourage the use of testing and support resources.

**4**

**Support**

Now through August

Actively support participating LEAs as Level-2 representatives and begin to develop best practices and guidance for Go-Live.

# QUESTIONS

